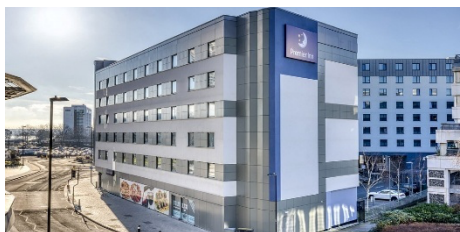


Hotels

Hotel options are within walking distance of the [National Oceanography Centre](#) and provided for convenience only. The AUV2026 Symposium Committee does not endorse or recommend any specific hotel or accommodation provider. For walking directions refer to [Google Maps](#)



[Premier Inn Southampton West Quay](#) ☆☆☆

95 Harbour Parade, Southampton SO15 1BA

🚶 1.4 miles to NOC - 30-minute walk

Our Southampton West Quay Premier Inn is in the heart of the city and has an integrated restaurant serving a mix of traditional and contemporary dishes.



[Premier Inn Southampton Cumberland Place](#) ☆☆☆

12-13 Cumberland Place, Southampton SO15 2WY

🚶 1.7 miles to NOC - 40-minute walk

Close to the city centre, just a short walk from Southampton Central rail station



[Moxy Southampton](#) ☆☆☆☆

Harbour Parade, Southampton SO15 1BA

🚶 1.5 miles to NOC - 35-minute walk

Moxy Southampton is the city's sustainable hotel choice, holding LEED Platinum, the highest green building certification, and an ideal stay for eco-conscious travellers.



[Leonardo Royal Hotel Southampton Grand Harbour](#) ☆☆☆☆

West Quay Rd, Southampton SO15 1AG

🚶 1.0 mile to NOC - 20-minute walk

With its attractive location, this modern hotel provides magnificent views over Southampton's historic Old Walls, Mayflower Park and the waterfront.



[Southampton Harbour Hotel & Spa](#) ☆☆☆☆☆

5 Maritime Walk, Southampton SO14 3QT

🚶 1.1 miles to NOC - 25-minute walk

Introducing lifestyle luxury to the marina and city, Southampton Harbour Hotel & Spa has transformed Ocean Village with its striking super-yacht inspired design.



[White Star](#) ☆☆☆☆☆

28 Oxford Street, Southampton SO14 3DJ

🚶 0.8 miles to NOC - 20-minute walk

In central Southampton, The White Star Tavern sits amid art, culture and maritime heritage, offering an animated and energetic scene at the weekend.



[room2 Southampton](#) ☆☆☆☆

1 Queens Terrace, Southampton SO14 3BP

✎ 0.7 miles to NOC - 15-minute walk

room2 Southampton, the world's first "Homotel," combines home comforts with hotel perks. Overlooking Queens Park, rooms feature kitchen, king bed, and space to work or relax.

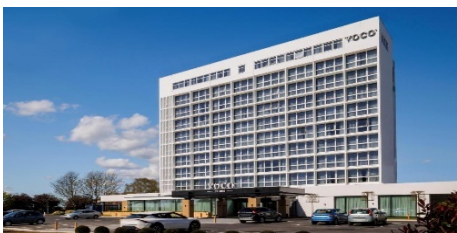


[Ennios Boutique Hotel](#) ☆☆☆☆

Town Quay, Southampton SO14 2AR

✎ 0.7 mile to NOC - 15-minute walk

Above Ennio's Italian restaurant, this historic Victorian building offers stylish, individually designed rooms in a first-class boutique setting.

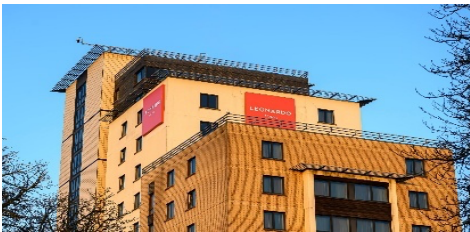


[voco | Southampton](#) ☆☆☆☆

Herbert Walker Ave, Southampton SO15 1AG

✎ 1.0 mile to NOC - 20-minute walk

Opposite the waterfront and Mayflower Park, the hotel offers a restaurant, 24-hour room service, lounge bar, and access to a gym, pool, jacuzzi and sauna.

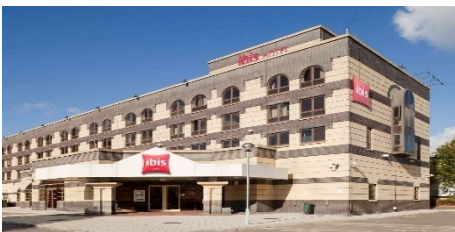


[Leonardo Hotel Southampton](#) ☆☆☆☆

Charlotte Place, Southampton SO14 0TB

✎ 1.7 miles to NOC - 40-minute walk

Centrally positioned in the city, just a 15-minute walk from the central train station, overlooking East Park, offers guests comfort with bar and restaurant facilities on site.



[Ibis Southampton](#) ☆☆☆

3 West Quay Rd, Southampton SO15 1RA

✎ 1.5 miles to NOC - 30-minute walk

In the centre of Southampton, close to West Quay Shopping Centre, the business district, the port and the theatres.



[Novotel Southampton](#) ☆☆☆☆

1 West Quay Road, Southampton SO15 1RA

✎ 1.5 miles to NOC - 30-minute walk

Opposite West Quay shopping Centre and close to the waterfront. Enjoy the restaurant, bar, indoor heated swimming pool, gym and sauna.